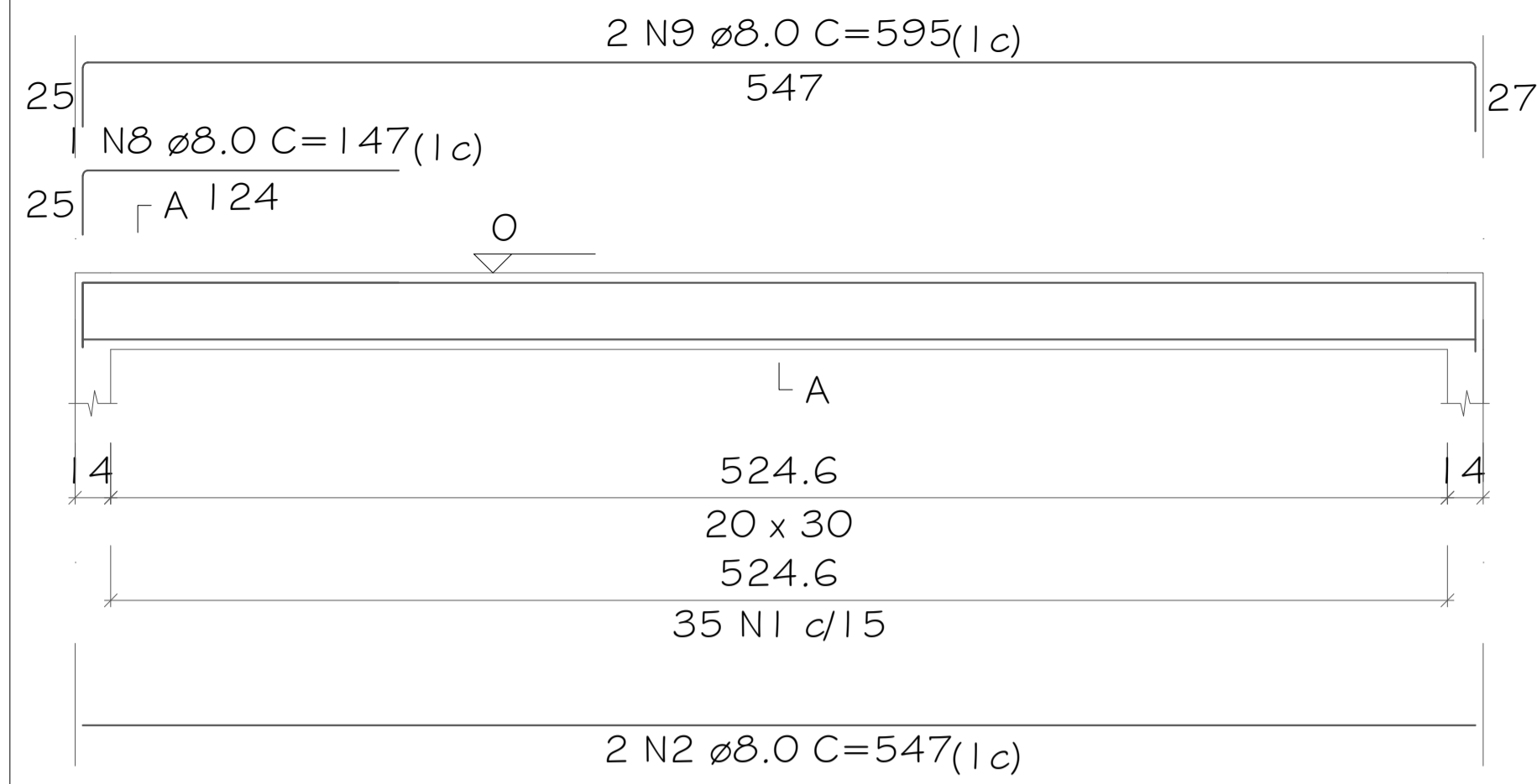
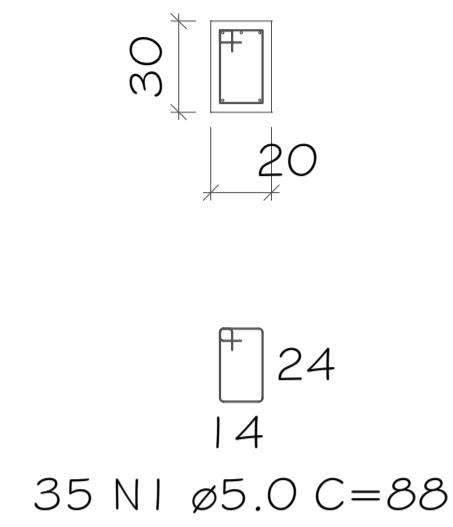


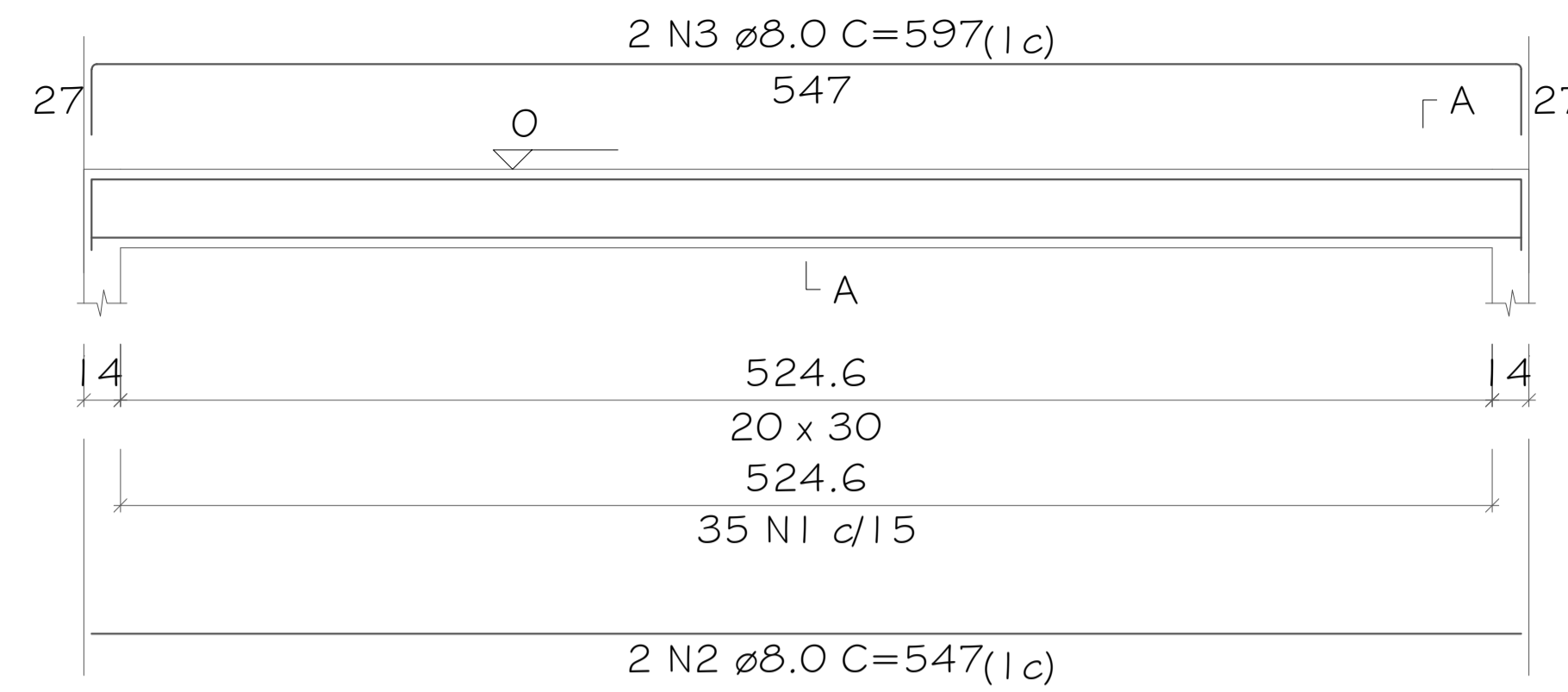
V5
ESC 1:25



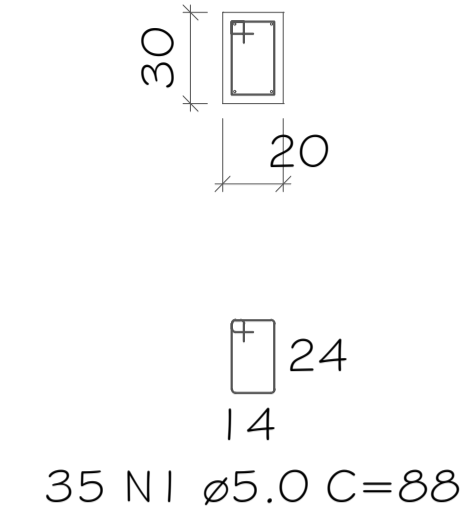
SEÇÃO A-A
ESC 1:25



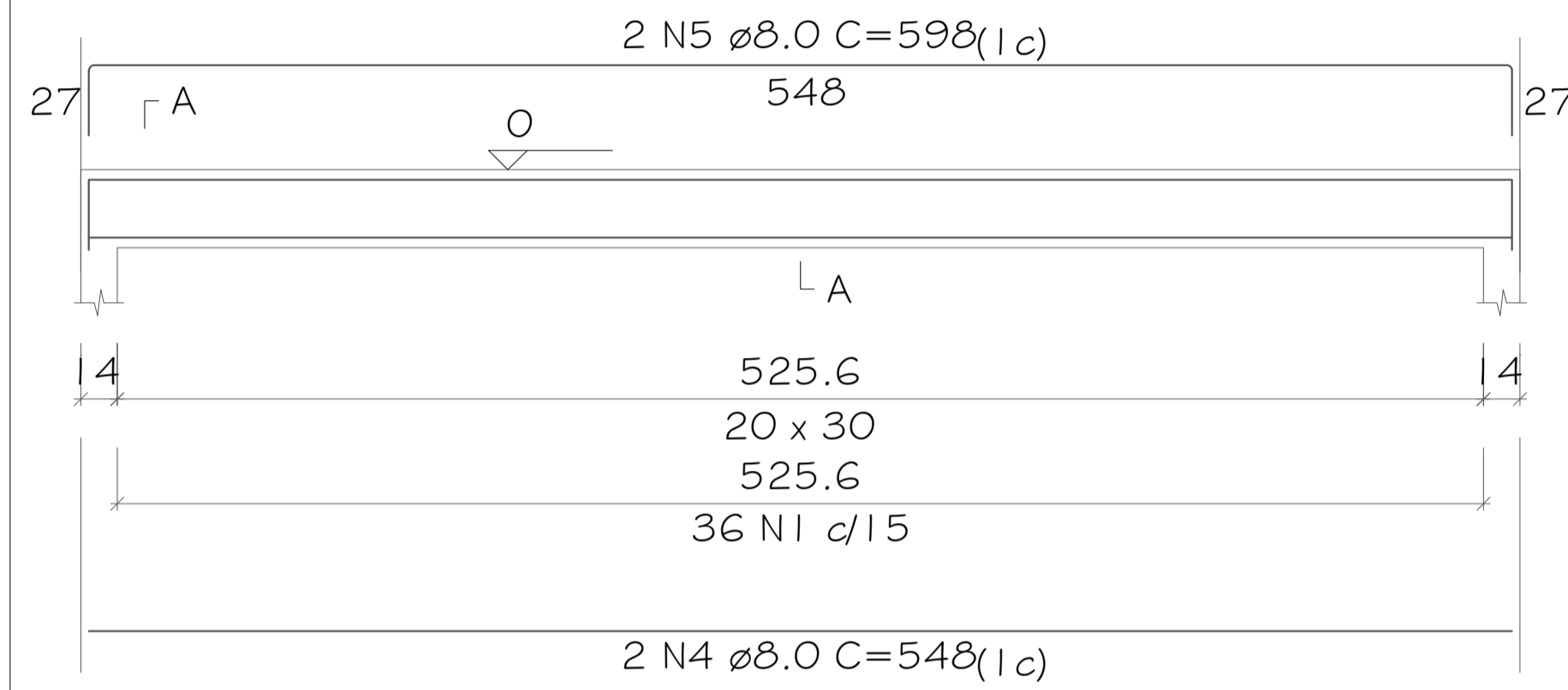
V6
ESC 1:25



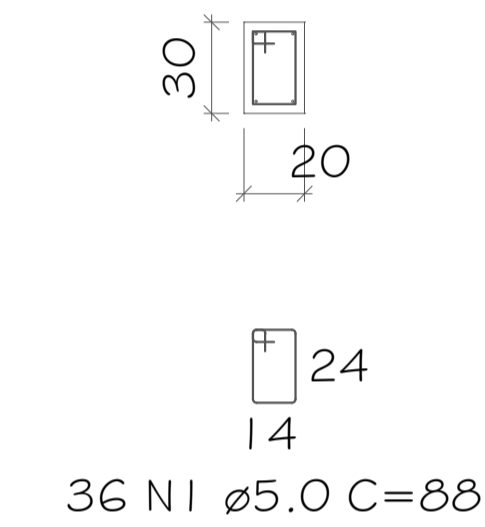
SEÇÃO A-A
ESC 1:25



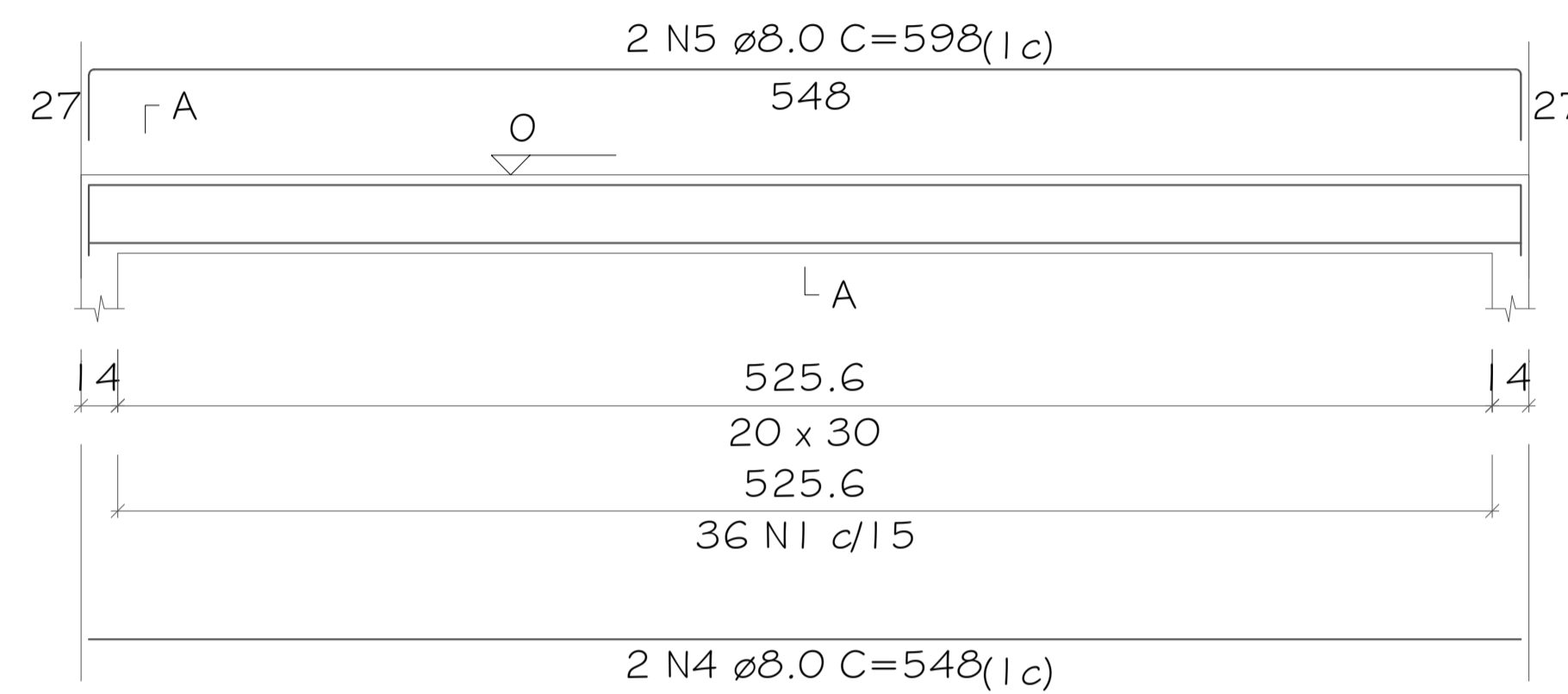
V7
ESC 1:25



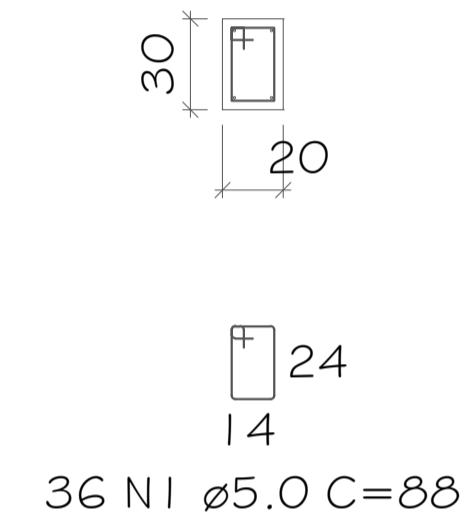
SEÇÃO A-A
ESC 1:25



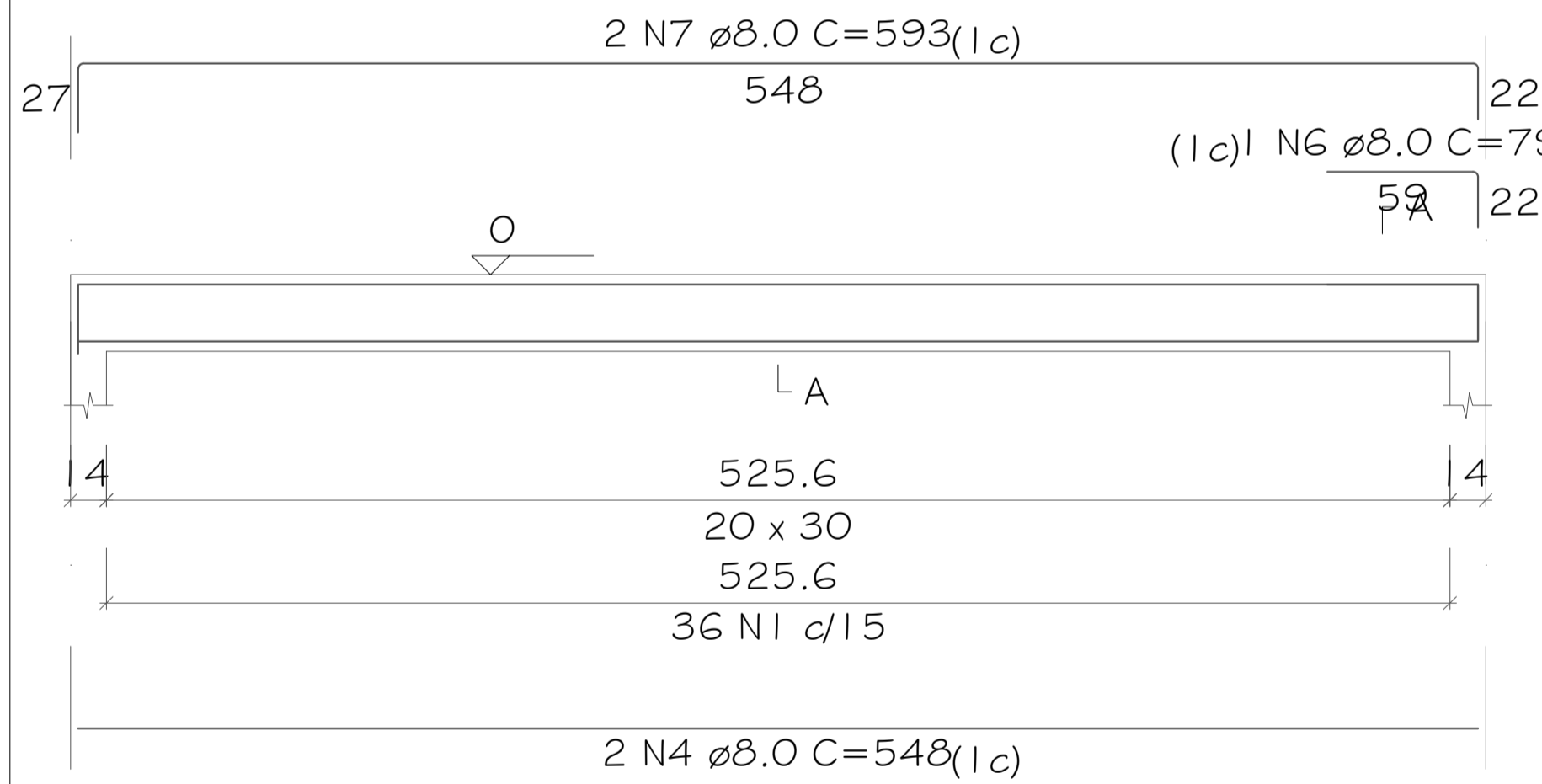
V8
ESC 1:25



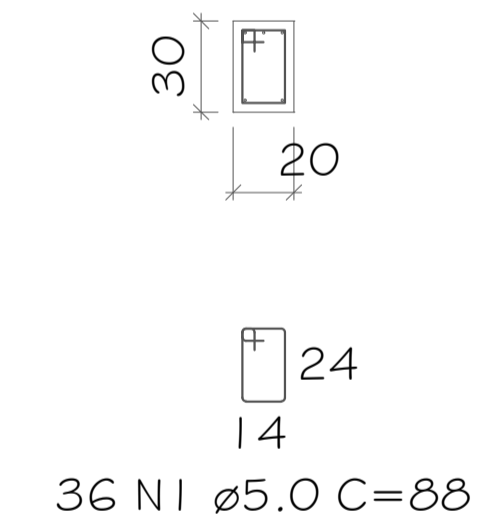
SEÇÃO A-A
ESC 1:25



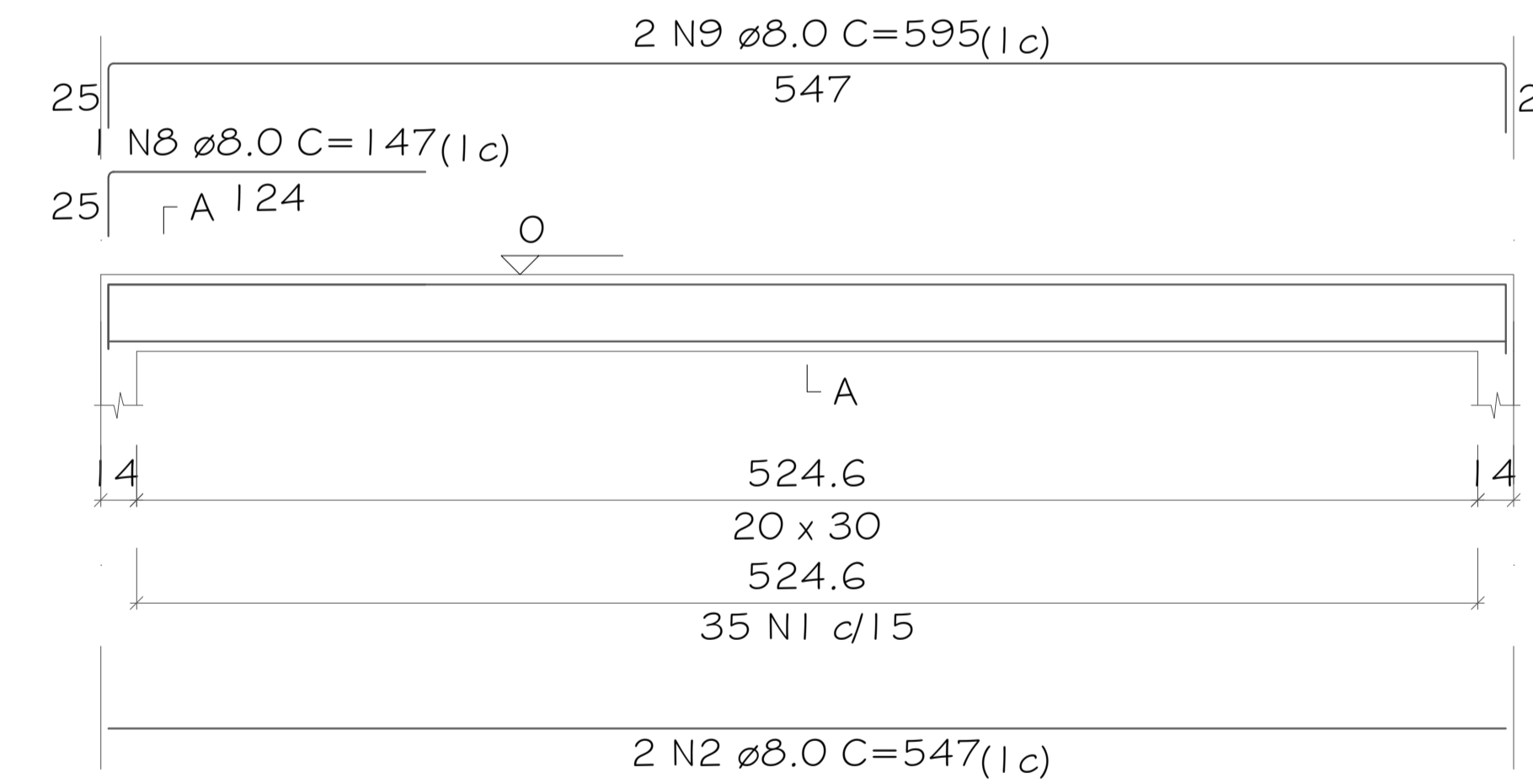
V9
ESC 1:25



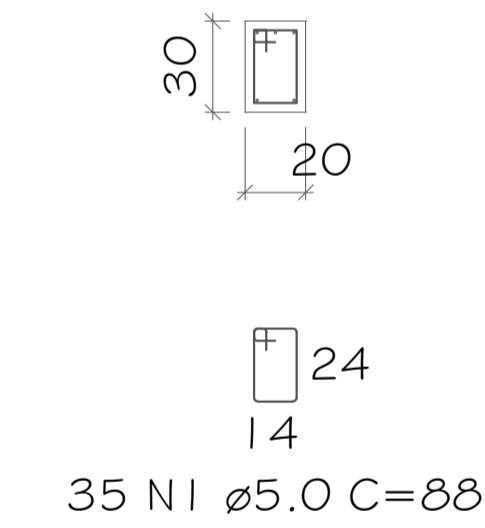
SEÇÃO A-A
ESC 1:25



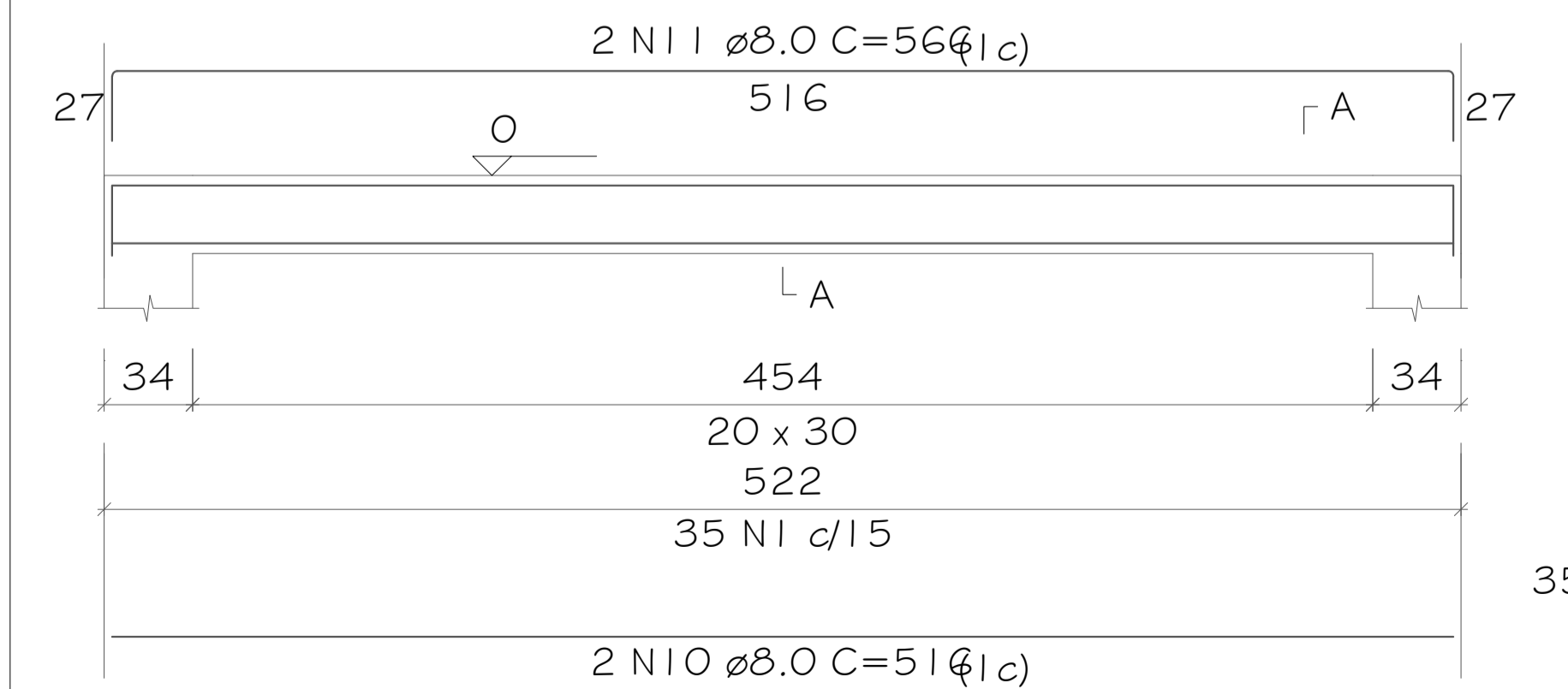
V10
ESC 1:25



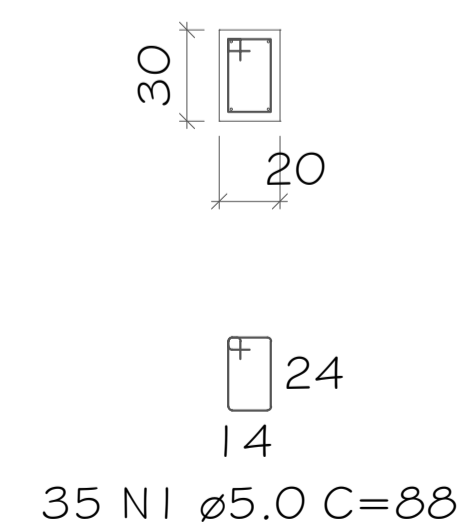
SEÇÃO A-A
ESC 1:25



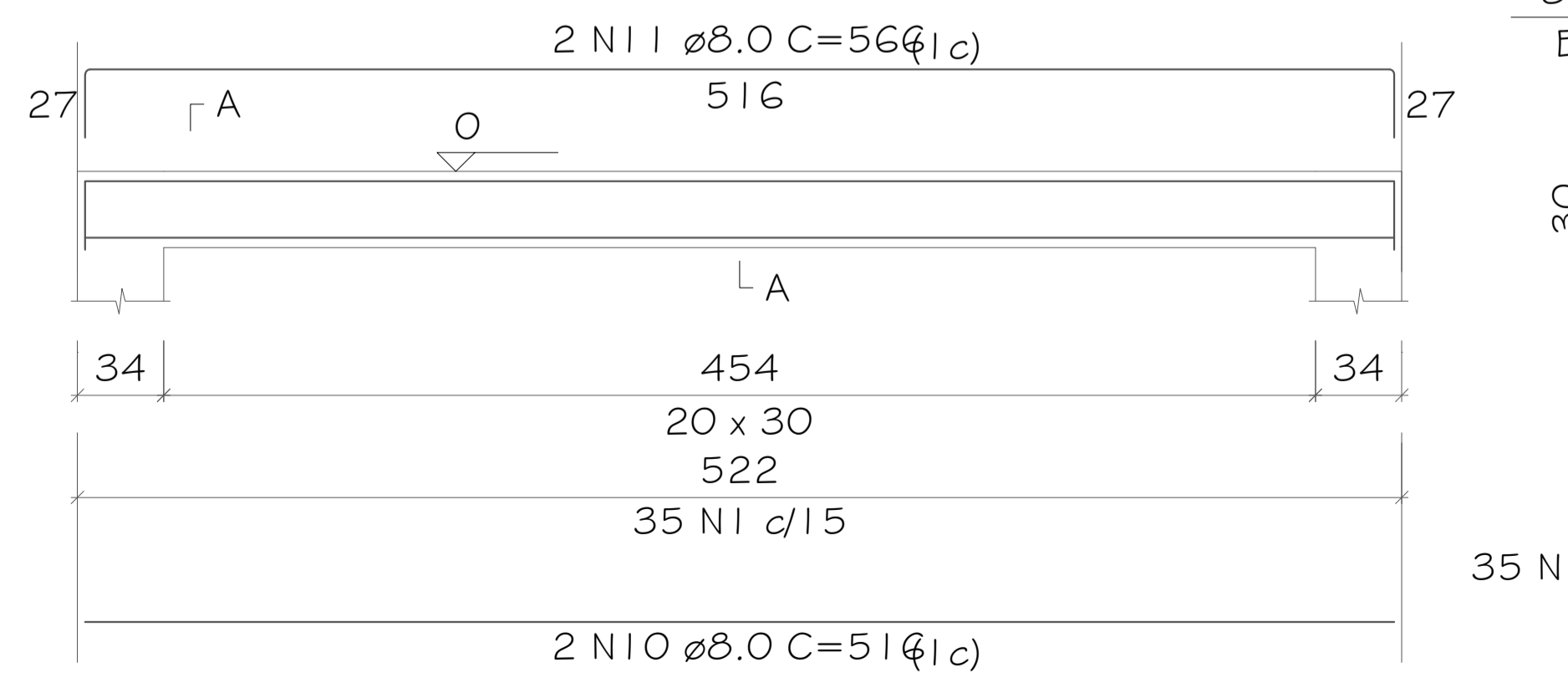
V11
ESC 1:25



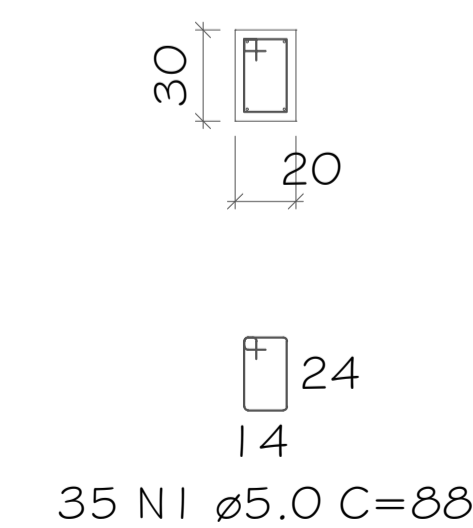
SEÇÃO A-A
ESC 1:25



V12
ESC 1:25



SEÇÃO A-A
ESC 1:25



RESUMO DO AÇO

AÇO	DIAM (mm)	C.TOTAL (m)	PESO + 10% (kg)
CAGO	5.0	374.88	
CA50	8.0	275.77	

Volume de concreto (C-25) = 3.70 m³
Área de forma = 36.98 m²

ASSURE
ENGENHARIA E TECNOLOGIA

PROJETO
REFORMA E AMPLIAÇÃO PAVILHÃO L. CUTIA

LOCAL
Interior - Linha Cutia, Novo Xingu/RS - CEP: 99687-000

RESPONSÁVEL TÉCNICO
Tays Lucia Remoniti
CREA/RS 247973

PROPRIETÁRIO
Prefeitura Municipal de Novo Xingu
04.207.526/0001-06

CONTEÚDO
Vigas baldramas - Pavilhão existente

PROJETO
Estrutural

ÁREA
62.33m²

DATA
18/06/2024

FRANCHA
02/11

DIREITOS AUTORAIS RESERVADOS. LEI 9.610/98